



W.A. BLUOMETAL

WA Bluemetal Whitby Quarry Communication Update

Proposed New Workshop

Purpose of this Communication

WA Bluemetal is engaging with key stakeholders for the Whitby Blue Metal Quarry to provide information on the proposed construction and operation of a new workshop.

Background

As the existing Whitby quarry workshop will be impacted by the realignment of quarry haul roads, WA Bluemetal is proposing to construct and operate a new workshop.

The new workshop will provide for maintenance and servicing of quarrying equipment and vehicles and will include a warehouse store, offices, a crib room and amenities.

The workshop is to be located on Mining Lease M70/1240 on land which have already been cleared of native vegetation under Clearing Permit CP 8038/1.

An amendment to the approved Mining Proposal and Mine Closure Plan is required as the proposed workshop was not included in the existing approval.

Workshop Details

Construction of the workshop will be by combination of concrete tilt up wall panels, steel frames and Colorbond Trimdex wall cladding. The construction period is estimated to be 9 months and will commence following approval from the Department of Mines, Petroleum and Exploration.

The building will be designed to relevant Australian Building Codes and will incorporate appropriate fire risk mitigation features noting its location near natural bushland.

Whilst the location falls outside of the Landscape Protection Area of the Shire of Serpentine Jarrahdale, the location has been selected to minimise visibility and wall cladding colour will be selected to best reduce any residual visual amenity impacts.

Oils and lubricants will be stored in concrete bunded areas and the washdown facility will incorporate, water separation and reuse and waste oil recovery for safe offsite disposal.

Workshop water needs will be supplied by rainwater catchment and storage tanks and from the existing quarry dam. No connection to scheme water is required.

Sewage and grey water will be managed on site through a septic tanks and leach drains.

At the completion of quarry life, if there are no further needs for the workshop, above ground components will be removed and land will be rehabilitated to a condition compatible with the post-mining land use.

Figures 1, 2 and 3 show the location, design and the exterior elevations of the workshop.

Further Information

Should you require any further information please contact:

Roger Stephens
Planning and Environment Manager
WA Bluemetal
Phone: 9434 7777
Email: roger.s@walimestone.com
Website: www.walimestone.com

Please ensure any comments or queries are received by WA Bluemetal by the 13th May 2026.

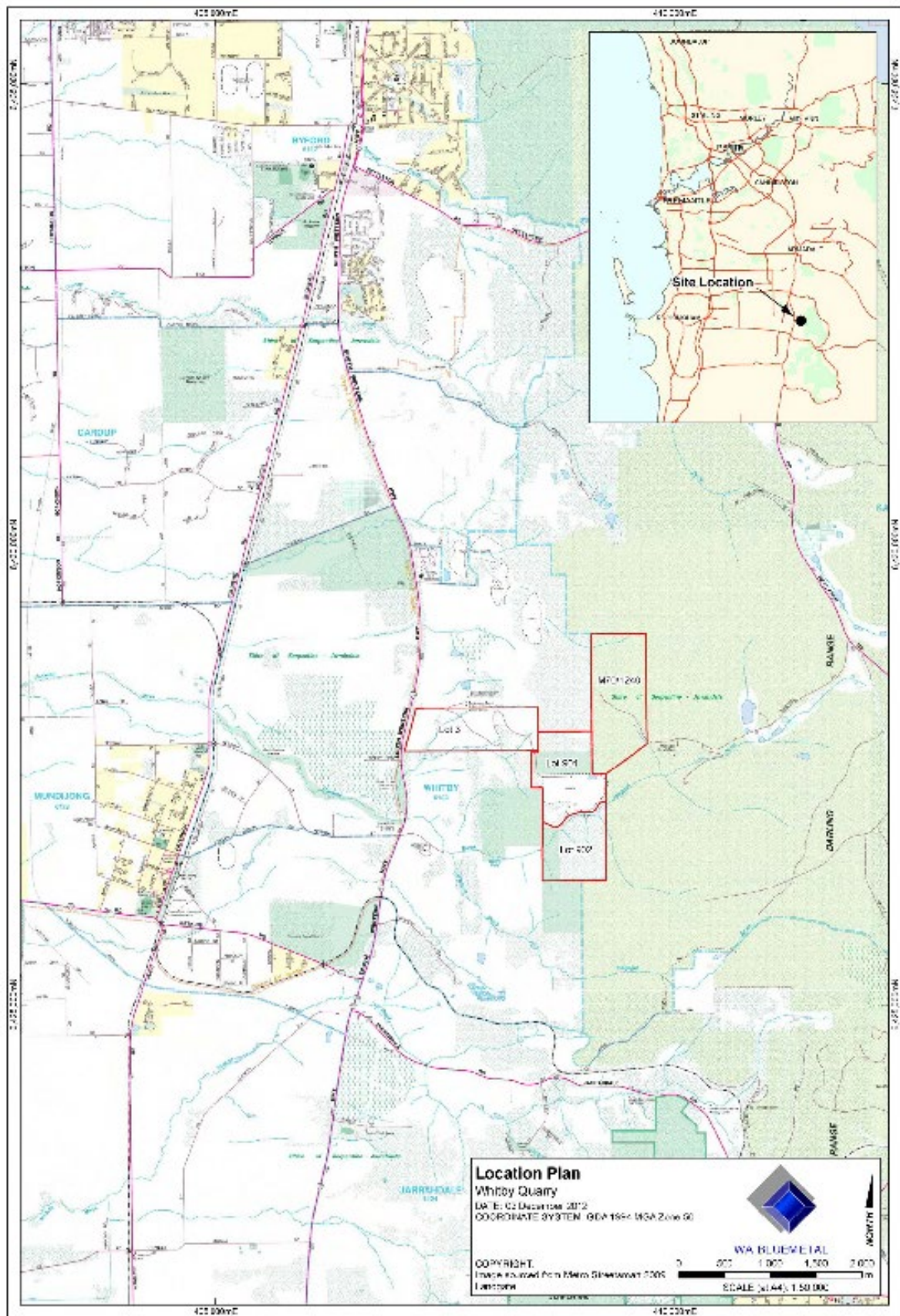


Figure 1: General Location

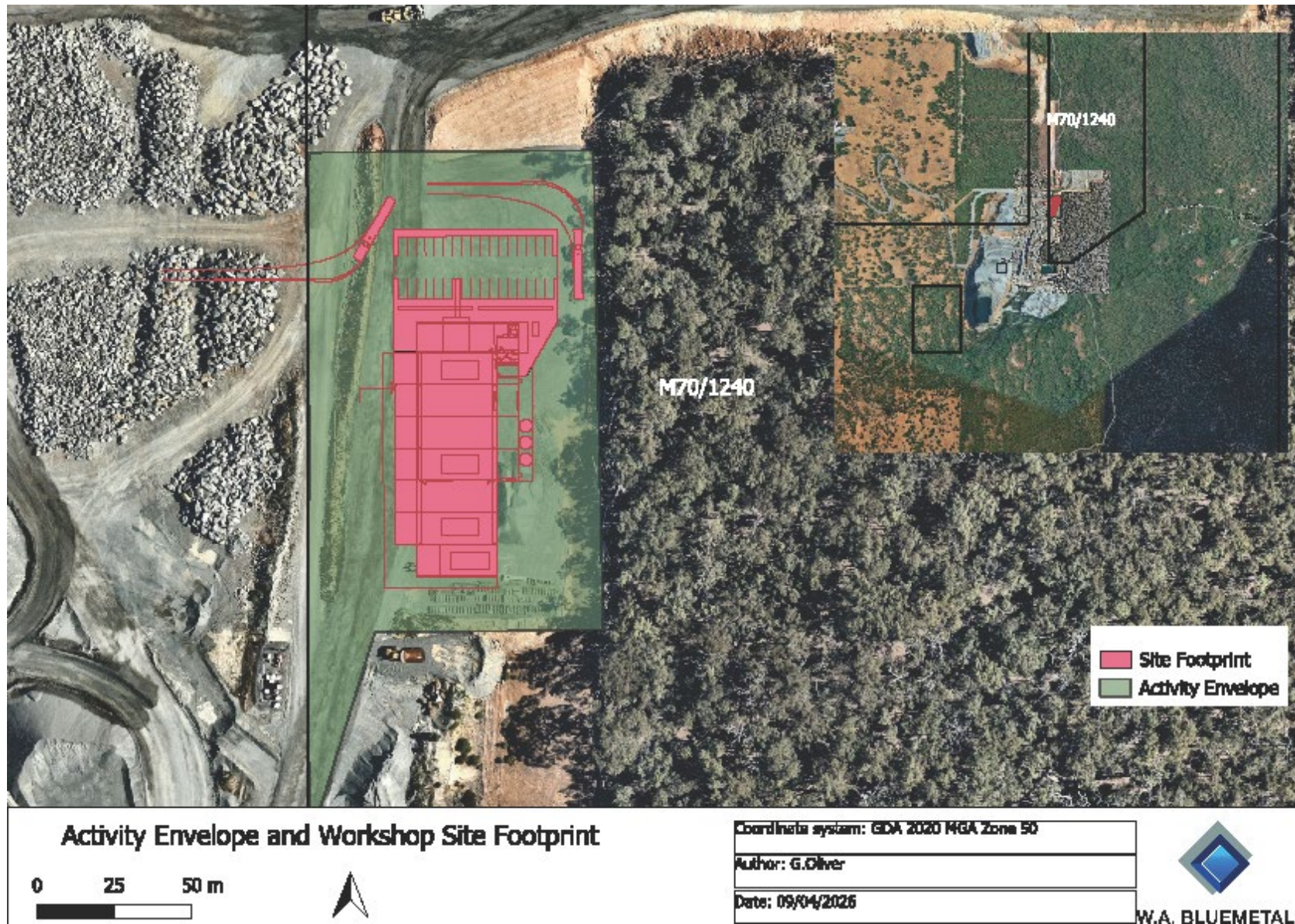


Figure 2: Activity Envelope and Workshop Site Footprint

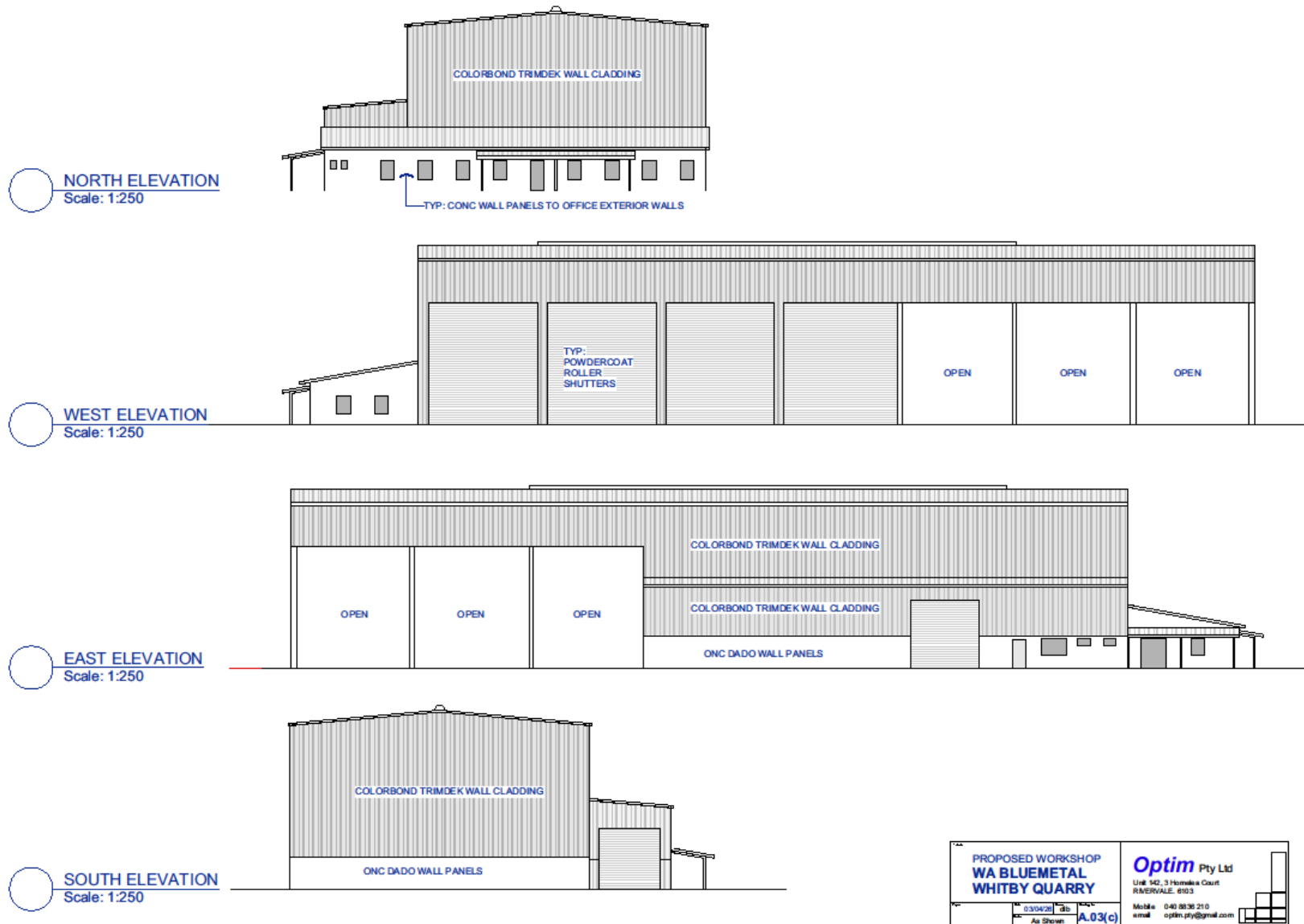


Figure 3: Workshop Exterior Elevation